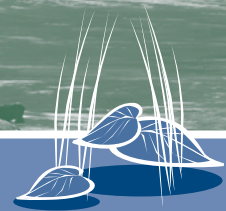




Volume LXV No. 1  
February 2010

## BRANDYWINE VALLEY ASSOCIATION Watershed NEWS



### BVA *Leadership*

#### OFFICERS

Frederick Smith  
President  
Brenton R. Grant, III  
President Elect  
Leighton Everhart  
Vice President  
Kara Coats  
Secretary  
Tom Varley  
Treasurer

#### STAFF

James E. Jordan, Jr.  
Executive Director  
Robert Struble Jr.  
Watershed Conservation Director  
Giselle Cosentino  
Education Director  
Cynthia Jaros  
Development Director  
Emily Cost  
Education Program Coordinator  
Betsy Stefferud  
Administrative Assistant  
Art Taylor  
Maintenance Technician  
Kathy Bergmann  
Jane Fava  
Red Streams Blue Coordinators

## Campaign Update

**Campaign Goal:** \$3,192,300  
**Raised to Date in gifts & pledges:** \$2,762,213 (87%)  
**Still Need:** \$430,087

Since 2006 over 130 generous individuals have donated to the Make a Splash Campaign, with gifts ranging from \$20 to over \$125,000. Co-Chairs Bunny Meister and Sandy Retzlaff extend their deepest thanks to everyone who has contributed so far. Each and every contribution makes a difference!

BVA has set an ambitious goal to raise the remaining \$430,087 by this October with plans to celebrate our success at the Annual Dinner. So far, friends and members of BVA have contributed more than \$830,821. Some donors have sent checks, others gifts of stock. Some have made one-time donations, others multi-year commitments.

In the months to come — and as you receive your tax refund — please consider making a meaningful contribution to the Make a Splash Campaign to protect our water for future generations. Brandywine Valley Association is a 501(c)(3) public charity, and your contribution is tax deductible as allowed by law. To donate now, visit our website at [www.brandywinewatershed.org](http://www.brandywinewatershed.org) or contact Cynthia Jaros, Development Director, for more information at 610-793-1090.



*Funds raised through the Make a Splash campaign will make improvements to the facilities at our Myrick Conservation Center possible, including renovations of the historic Browning Barn (circa 1806) for watershed education programs. Rendering provided by Bernardon Haber Holloway Architects, PC.*



1760 Unionville-Wawaset Road  
West Chester, PA 19382  
t: 610-793-1090  
f: 610-793-2813  
water@bva-rcva.org  
[www.brandywinewatershed.org](http://www.brandywinewatershed.org)

## BVA – Red Streams Blue Program

With funding now exceeding more than one million dollars the Red Streams Blue Program will be expanding its planning area and undertaking three major stream restoration projects this spring. Restoration planning will begin in the east branch Brandywine area above Downingtown and will include the Shamona Creek drainage area, a tributary to the east branch. That work has already begun with the initial stream sampling which will lead to an assessment plan and then a restoration plan identifying projects which will improve stream quality.

BVA has also begun work in the upper west branch subwatershed. With support from the City of Wilmington and the Chester County Solid Waste Authority, BVA has begun the stream assessment portion of this project which is focusing on a cluster of agricultural activities on the west branch in Honey Brook Township. This is the first venture into a strictly agricultural setting which will be different from past plans that included some urbanized and suburban landscapes. The planning work will begin in the winter and the assessment should be completed during the spring.

This spring will also see the first restoration projects resulting from the Red Streams Blue Program. Working with the Chester County Conservation District BVA will be involved with stream restoration projects along the Plum Run in East Bradford Township and the Radley Run in Thornbury Township. The Plum Run project will involve restoration of an eroding section of Plum Run next to Strode's Mill. The bank will be lowered to reduce streambank erosion and to allow more use of the flood plain. On the Radley Run a section of stream a homeowner's

association open space will see streambank grading to reduce streambank erosion and the resulting sedimentation downstream. By regrading the streambank, better use will be made of the floodplain. A stream corridor planting program will follow to further improve water quality.

Beginning in March a major stream restoration project will take place on the upper Doe Run. The stream has severely eroded the banks which are comprised of legacy sediments deposited behind an old milldam. The stream will be put in its original stream channel and the legacy sediment removed to substantially reduce further bank erosion and sedimentation.

All of these restoration projects have been supported by grants from the Department of Environmental Protection which included Growing Greener and a PennVest Grant through the federal stimulus program. These will be the first three streambank restoration projects in the Red Streams Blue Program and will provide examples for many projects to follow.

Last November BVA teamed up with Arcelor/Mittal and the Borough of Parkesburg to complete a stream buffer planting along Little Buck Run in Parkesburg's Minch Park. Volunteers planted nearly 150 trees and shrubs which will help to protect a first order stream. In the spring volunteers will return to add wildflowers to selected areas, adding color to the trees and shrubs. This tree planting is representative of stream buffer projects which will continue to take place on many of the small streams in those watersheds that require improvement.

You can follow Red Streams Blue progress in the newsletter and the BVA website.

### *What Do Insects Say About a Stream?*

Take a look! What is that thing in the picture? If you have any idea what this animal is, you must be a nature enthusiast. If you know that it's an insect, you're on the right path! Some of the characteristics of an insect can be identified in this picture; an exoskeleton, a body with three parts – the head, thorax, and abdomen – three pairs of jointed legs, compound eyes and two antennae.

Remember that insects go through many stages of life. Think of a butterfly, which goes through a lifecycle called a complete metamorphosis. A butterfly is the adult phase of this animal, but first it was an egg, then a caterpillar, then a chrysalis! The insect in the picture is a hellgrammite. After a hellgrammite hatches from an egg, it will live most of its life on the bottom of streams and rivers, and can often be found under rocks. In winter, the hellgrammite may burrow underground and when it emerges in spring or summer it will be an adult called a Dobsonfly. The Dobsonfly will start this cycle all over again by laying eggs, usually on the leaves of plants near a stream.

Hellgrammites are not poisonous, although they can pinch. This is how they catch their underwater food of insect larvae. They breathe with gills, can grow to be a few inches long and have two hooks at the end of their abdomen. Bear in mind, when you see an insect that might look intimidating, that they are part of the most diverse group of animals on Earth. Their role as citizens of the planet is important. Their presence can tell us about the health of a stream. Hellgrammites and Dobsonflies prefer to only live in and near clean, high quality waterways. This means that if you find them, the stream, creek or river where they live is healthy enough to support the population of these insects. Look for hellgrammites in riffle areas with fast moving water, under rocks and in piles of leaves caught on the rocks in streams and creeks. Dobsonflies, with their long mandibles and wings, can be found near trees, roots, and on leaves of nearby plants.


See if you can figure out who has longer mandibles, the male Dobsonfly or the female? If you know the answer, write to me at [water@bva-rcva.org](mailto:water@bva-rcva.org).

Until then, have fun looking for insects!

*Your Friend,  
Hellgrammite*



## Third Thursdays for Nature Enthusiasts

Members and nonmembers are invited to an evening of fun and good company while learning something new about nature. The  symbol indicates a family friendly program.

### March 18th - Family Stargazing

7:00 to 9:00 PM

Do you know how to find the big dipper in the sky? How about Polaris, our north star? Join us for an evening of stargazing and some Greek and Roman mythology about the constellations. Bring a blanket, a flashlight and binoculars if you have them. Hot cocoa will be provided!

### April 15th - Green Roofs

5:30-7:00 PM

Join us for an informational community meeting about green roof technology and the environmental benefits of green roofs. What are the factors involved in designing and installation? This is a presentation of Weston Solutions, Inc. Bring your questions



[www.greengridroof.com](http://www.greengridroof.com)

### Friday, May 21st - Myrick Center Camp Out 6:30 PM to 8:30 AM, Saturday

This is a unique opportunity to enjoy the night sounds of the Myrick Center. Learn how to build a safe campfire, take a night hike, make s'mores, listen for owls and camp under the stars. This is a great way to introduce the family to camping in a safe environment with experienced staff. A camping list will be provided at registration. Space is limited.

### June 17th - Lyme Disease Q & A

5:30 to 7:00 PM

Chester County has one of the highest rates of Lyme disease in the world. Learn how to protect yourself from the ticks that spread the disease, and what to do if you are bitten. Presentation by the Pennsylvania Lyme Disease Awareness Committee, a collaboration of the Chester/Delaware County Farm Bureau, the Lyme Disease Association of Southeastern Pennsylvania, Inc., and the Chester County Health Department.

**BVA/RCVA Members: \$5.00 for ages  
13 to adult. Kids are free.**

**Nonmembers: \$7.00 for ages 13 to adult.  
Kids are free.**

Payment and registration are due by the Monday before your program. Children 12 years old and under are free and must be accompanied by an adult. Parking is on the office side of the property. Meet at the Browning Barn.

## Gardening for Wildlife...and You! FREE evening public lecture

Tom Brightman, Land Steward at Longwood Gardens, will be discussing the evolution of the garden habitat he and his wife tend in Kennett Square, PA. Using slides from his home garden, he will guide the audience in

- developing a vision for their garden
- cultivating a sense of place, native plant and wildlife interactions, and aesthetics
- learning about plant selection, management issues, and related topics.

**When: Tuesday, March 9, 2010, 7:00-9:00 pm**

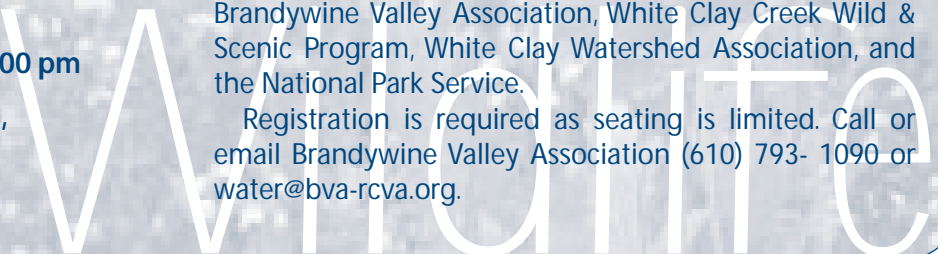
**Where: Hockessin Library, Valley Road,  
Hockessin, Delaware**

**Who: Tom Brightman,  
Land Steward at Longwood Gardens;**

Tom is the Land Steward at Longwood Gardens, responsible for the health and care of the 700 acres of natural and perimeter land at Longwood and was previously the Easement Manager for the Brandywine Conservancy's Environmental Management Center.

This event is sponsored by Red Clay Valley Association, Brandywine Valley Association, White Clay Creek Wild & Scenic Program, White Clay Watershed Association, and the National Park Service.

Registration is required as seating is limited. Call or email Brandywine Valley Association (610) 793- 1090 or [water@bva-rcva.org](mailto:water@bva-rcva.org).





Brandywine Valley Association  
 1760 Unionville-Wawaset Road  
 West Chester, PA 19382

*Return Service Requested*

Nonprofit  
 Organization  
 US Postage Paid  
 Unionville, PA  
 Permit No. 15



## UPCOMING EVENTS

- Thursday, March 18th**  
Third Thursdays – Family Stargazing
- Sunday, April 4th**  
Brandywine Hills Point-to-Point
- Thursday, April 15th**  
Third Thursdays – Green Roofs
- Saturday, April 24th**  
Brandywine Creek Clean-up
- Friday, May 21st**  
Third Thursdays – Myrick Center Camp Out
- Sunday, June 13th**  
Family Nature Day
- Thursday, June 17th**  
Third Thursdays – Lyme Disease Q & A

# 2010

## BVA NEW MEMBERS

- Mr. Albie Forwood**
- Mr. and Mrs. John Hornsey**
- Ms. Angie Natoli**
- Mr. and Mrs. David C. Rayburn**

## Chester County Astronomical Society

Date	Cloud Date
03/12/10	03/13/10
04/16/10	04/17/10
05/14/10	05/15/10
06/11/10	06/12/10